



# JURUTERA MINSAR CONSULT SDN BHD

Civil & Structural Consulting Engineers



## COMPANY PROFILE

ROAD & BRIDGE DIVISION

Committed to Excellence Since 1985

# ABOUT US

## MINSAR'S ROAD & BRIDGE DIVISION

Jurutera Minsar Consult Sdn Bhd (Minsar) is an award-winning, Sarawak-based engineering consultant firm established in 1985, with majority Bumiputra (52%) share participation. Since its inception, Minsar has been actively growing its staff strength and experience in the engineering field and has now over 160 staff comprising more than 60 qualified engineers. The Company is registered with the Board of Engineers Malaysia (BEM), Ministry of Finance (MOF), Unit Pendaftaran Kontraktor dan Juruperunding (UPKJ), and many other relevant government agencies, etc. as a Civil and Structural Engineering Consultant in Malaysia.

Since the company's inception, Minsar's Road & Bridge Division has been at the forefront of major infrastructure developments within Sarawak. Minsar has provided engineering consultancy services from conceptual planning and master-plan studies, to detailed civil and structural engineering design as well as contract administration and construction management of various road and bridge developments. The division has successfully delivered over 1,050 kilometres of roads, 120 bridges and flyovers totalling over 25 kilometres in length with a total project value of over RM12 billion. Our local strengths, world-class expertise and collaborative relationships have been recognized in the industry for delivering value to the satisfaction of our Clients' needs.



Member  
through



HEAD OFFICE BUILDING



ROAD & BRIDGE DIVISION OFFICE



ADMINISTRATIVE OFFICE





## OUR LEADERSHIP



**Ir. Hii Yuh Tung**  
*Principal*

Email : [hiiyt@minsar.com.my](mailto:hiiyt@minsar.com.my)

Ir. Hii established his engineering career in Singapore and Peninsular Malaysia, before becoming the Founder and Managing Director of Minsar since its establishment in 1985. He has over 45 years of experience in major civil infrastructure projects, and has been actively involved in the planning and management of major infrastructure developments in Sarawak. He is a member of MIEM, P.Eng, MACEM, C.Eng, MICE and MCIWEM, CWEM.



**Ir. Sa'id Bin Haji Dolah**  
*Director – Head of Project Management*

Email : [sdolah@minsar.com.my](mailto:sdolah@minsar.com.my)

Ir. Sa'id is an Executive Director in Minsar and is the Head of the Project Management Division in the Company. He has over 35 years of experience in Civil and Structural design and project management works. Ir. Sa'id has also gained much experience in the project management of road projects including current road developments such as the Pan Borneo Highway. He is a member of MIEM, P.Eng and MACEM.



**Ir. Dr. Adrian Hii**  
*Director – Head of Transportation*

Email : [adrian.hii@minsar.com.my](mailto:adrian.hii@minsar.com.my)

Ir. Dr. Adrian has over 20 years of experience in major international transportation projects, initially based in Australia, KL and Singapore before returning to Sarawak. He has since led various infrastructure projects for Minsar ranging from feasibility studies, master-planning, detailed design, contract administration and supervision as well as project management. Some notable projects include the KVMRT Sg. Buloh - Kajang Line, Malaysia-Singapore RTS Link, Pan Borneo Highway, KUTS Blue Line, and various long-span bridge projects on the Coastal Highway. He is a member of MIEM, P.Eng, MStructE, CEng, MIEAust, CPEng, MACEM, APEC Engineer, IntPE(Aus).



**Alvin Lee Sze Howe**  
*Associate*

Email : [alvin.lee@minsar.com.my](mailto:alvin.lee@minsar.com.my)

Alvin Lee Sze Howe has over 16 years of experience in civil and structural design and project management. His experience includes front end engineering, detailed engineering design and detailing, project management, authority submissions, preparation of tender documents & evaluations, and project execution for major infrastructure projects, including various major highways and long span bridges across Sarawak. He also coordinates works between the Head Office and our site personnel and is well versed in contract administration and construction management.



# OUR 39 YEARS OF EXPERIENCE



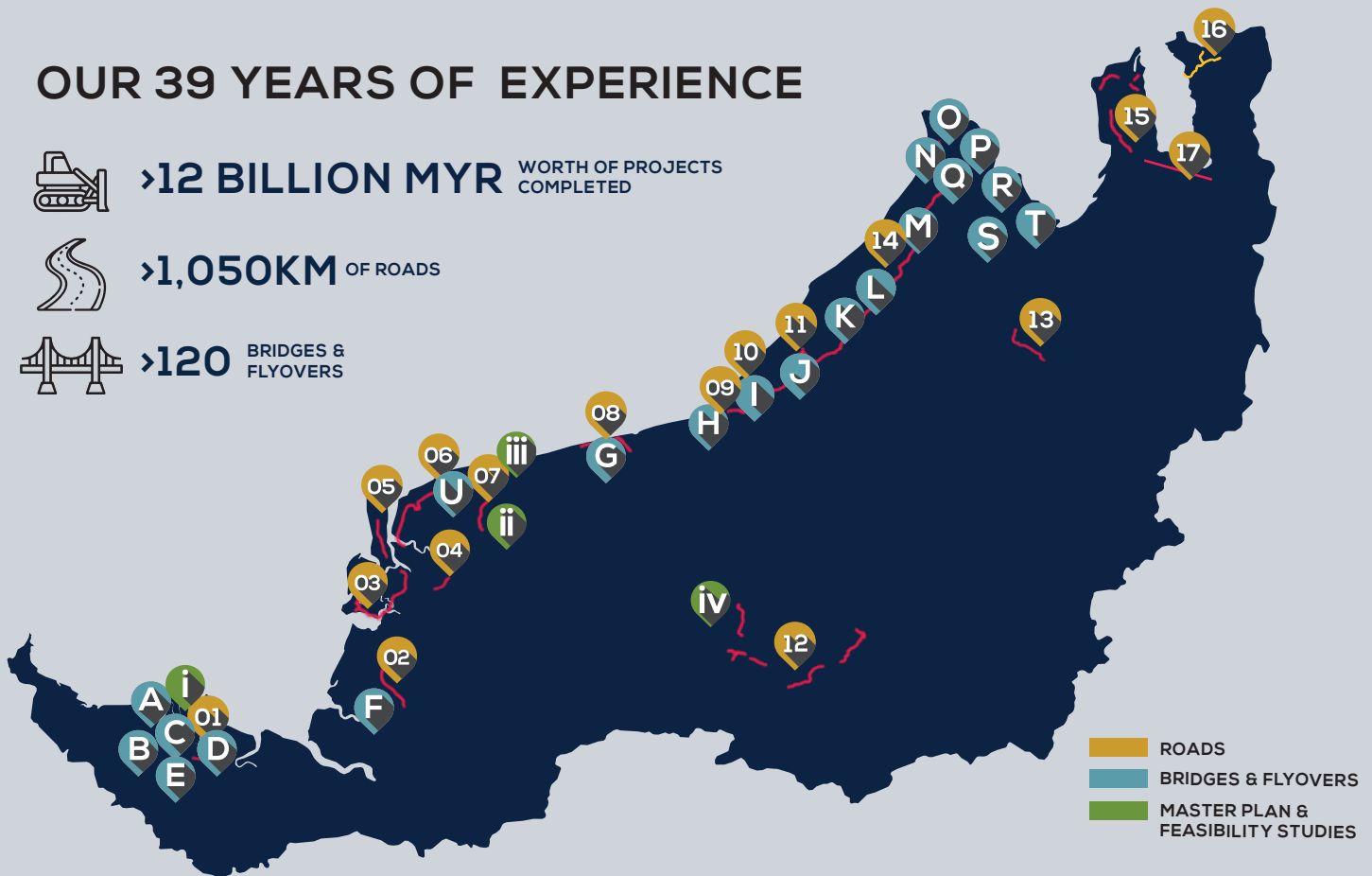
**>12 BILLION MYR** WORTH OF PROJECTS COMPLETED



**>1,050KM** OF ROADS



**>120** BRIDGES & FLYOVERS



## MAJOR ROAD PROJECTS

- KUCHING - KOTA SAMARAHAN - ASAJAYA EXPRESSWAY, KUCHING - SAMARAHAN DIVISION
- KUCHING URBAN TRANSPORTATION SYSTEM (KUTS) - BLUE LINE
- JALAN BETONG - KAYU MALAM, BETONG DIVISION
- PALOH - TANJUNG MANIS - BELAWAI COASTAL ROAD, MUKAH DIVISION
- JALAN SIBU - BAWANG ASSAN - SERENDANG, SIBU DIVISION
- PROPOSED TG. GELANG KPG. SG. NAI COASTAL ROAD AT PULAU BRUIT, MUKAH DIVISION
- MATU - KPG. TIAN - KPG. BAWANG COASTAL ROAD, MUKAH DIVISION
- JALAN SG. BIDUT - KPG. SEBEDIL - KPG. BUNGAN KECIL, MUKAH DIVISION
- BALINGIAN ROAD, MUKAH DIVISION
- JALAN SIBU - BINTULU FROM KEMENA INDUSTRIAL AREA TO BINTULU AIRPORT ROAD, BINTULU DIVISION
- PAN BORNEO HIGHWAY (NYABAU TO BAKUN JUNCTION), BINTULU - MIRI DIVISION
- ROAD LINKING MILE 32 & COASTAL ROAD, BINTULU DIVISION
- UPPER RAJANG DEVELOPMENT AGENCY (URDA), KAPIT DIVISION
- BARAM DAM ACCESS ROAD, MIRI DIVISION
- PAN BORNEO HIGHWAY (BAKUN JUNCTION TO PUJUT JUNCTION), BINTULU - MIRI DIVISION
- NORTHERN REGION DEVELOPMENT AGENCY (NRDA), LIMBANG DIVISION
- NORTHERN COASTAL HIGHWAY (NCH), LAWAS SECTION, LIMBANG DIVISION
- SABAH - SARAWAK LINK ROAD PHASE 2 (SSLR2) - P4

## MAJOR BRIDGE & FLYOVER PROJECTS

- BATANG RAMBUNGAN BRIDGE, KUCHING DIVISION
- SATOK FLYOVER, KUCHING DIVISION
- KENYALANG FLYOVER, KUCHING DIVISION
- JALAN SONG FLYOVER, KUCHING DIVISION
- BRIDGE OVER SG. SARAWAK AT SEJINGKAT, KUCHING - SAMARAHAN DIVISION
- BATANG SARIBAS BRIDGE, BETONG DIVISION
- BRIDGE OVER BATANG BALINGIAN, MUKAH DIVISION
- BRIDGE OVER BATANG KEMENA, BINTULU DIVISION
- MILE 5 - NYABAU INTERCHANGE, BINTULU DIVISION
- BAKUN FLYOVER, BINTULU DIVISION
- SUAI FLYOVER, MIRI DIVISION
- NIAH FLYOVER, MIRI DIVISION
- BELURU FLYOVER, MIRI DIVISION
- PUCHONG FLYOVER, MIRI DIVISION
- PUJUT FLYOVER, MIRI DIVISION
- PUJUT LINK FLYOVER, MIRI DIVISION
- BRIDGE OVER SG. MIRI, MIRI DIVISION
- MIRI AIRPORT FLYOVER, MIRI DIVISION
- MARUDI BRIDGE OVER BATANG BARAM, MIRI DIVISION
- LONG LAMA BRIDGE OVER BATANG BARAM, MIRI DIVISION
- BATANG IGAN BRIDGE, MUKAH DIVISION, SARAWAK (ICE)

## MASTER PLAN & FEASIBILITY STUDIES

- GREATER KUCHING DEVELOPMENT PLAN STUDY
- KUCHING CITY COMPETITIVENESS MASTER PLAN STUDY
- MASTER PLAN OF DEEP SEA PORT AT TANJUNG PO, KUCHING
- MASTER PLAN AND INFRASTRUCTURE STUDY FOR ISTHMUS DEVELOPMENT - KUCHING
- SIBU TRAFFIC STUDY
- SARAWAK COASTAL FEASIBILITY STUDY & DESIGN
- MASTER PLAN FOR KAPIT NEW TOWNSHIP
- HIGHWAY NETWORK DEVELOPMENT PLAN 2040 FOR SARAWAK

# CAPABILITY OVERVIEW



## FIELD SURVEY & INVESTIGATION

- Planning and formulating a programme for topographical survey, and soil investigation works.



## MASTERPLANS & FEASIBILITY STUDIES

- Traffic demand analysis and establishing technical, economic and financial feasibility of proposed developments.
- Hinterland studies.
- Preparation of implementation plans and phasing of development.



## GEOMETRIC DESIGN OF ROADS & BRIDGES

- Geometric design of roads and bridges in accordance to the latest standards and specifications.



## ROAD DRAINAGE & CULVERT DESIGN

- Design of Storm water drainage for surface runoff.
- Design of Surface Drainage layout and Sub-surface drainage.
- Design of various culverts to latest design standards.



## ROAD PAVEMENT DESIGN

- Design of Flexible Road Pavements.
- Design of Rigid Pavements.
- The formulation of Road Pavement Management System.



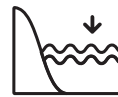
## BRIDGE DESIGN & ASSESSMENTS

- Conceptual schemes, detailed analysis, design and calculation of short and long span bridges in accordance to the latest bridge design standards and local authority requirements.
- Bridge Inspections and Structural Assessments.



## ROAD FURNITURE & PAVEMENT MARKINGS

- Design of road signage and application of road furniture and pavement markings in accordance to the latest design standards and local authority requirements.



## HYDROLOGICAL & HYDRAULIC STUDIES

- Hydrological study based on historical data.
- Hydraulic analysis of rivers based on hydrographic survey data.



## CONTRACT SUPERVISION & PROJECT MANAGEMENT

- Preparation of tender and contractual documents.
- Tender evaluation.
- Construction Planning and Sequencing.



## GEOTECHNICAL DESIGN

- Retaining structures and bridge foundations.
- Ground Treatment and Slope Protection Works.

### ROADS / CIVIL / BRIDGE WORKS DESIGN SOFTWARE



### STRUCTURAL & GEOTECHNICAL DESIGN SOFTWARE



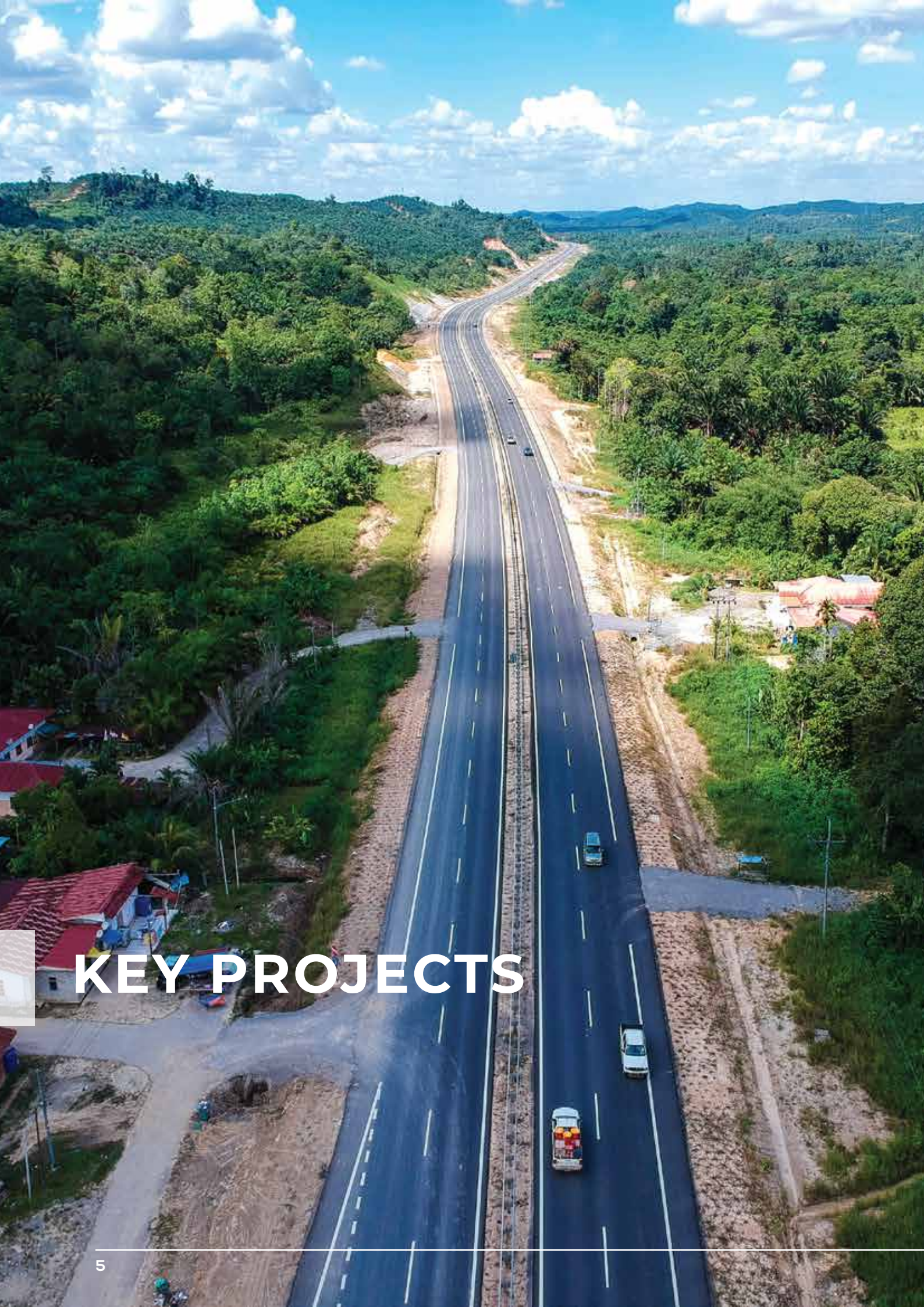
### DRAFTING SOFTWARE



### AIRPORT DESIGN SOFTWARE







# KEY PROJECTS



## NEW KUCHING-KOTA SAMARAHAN- ASAJAYA EXPRESSWAY (PHASE 1) SAMARAHAN DIVISION, SARAWAK

Upgrading of existing 7.3km of 2 lane road to 4 lane dual carriageway, and construction of 5 new roundabouts. Application of successful ground treatment methods over soft clay throughout the expressway has mitigated long-term differential settlements resulting in an even pavement surface.



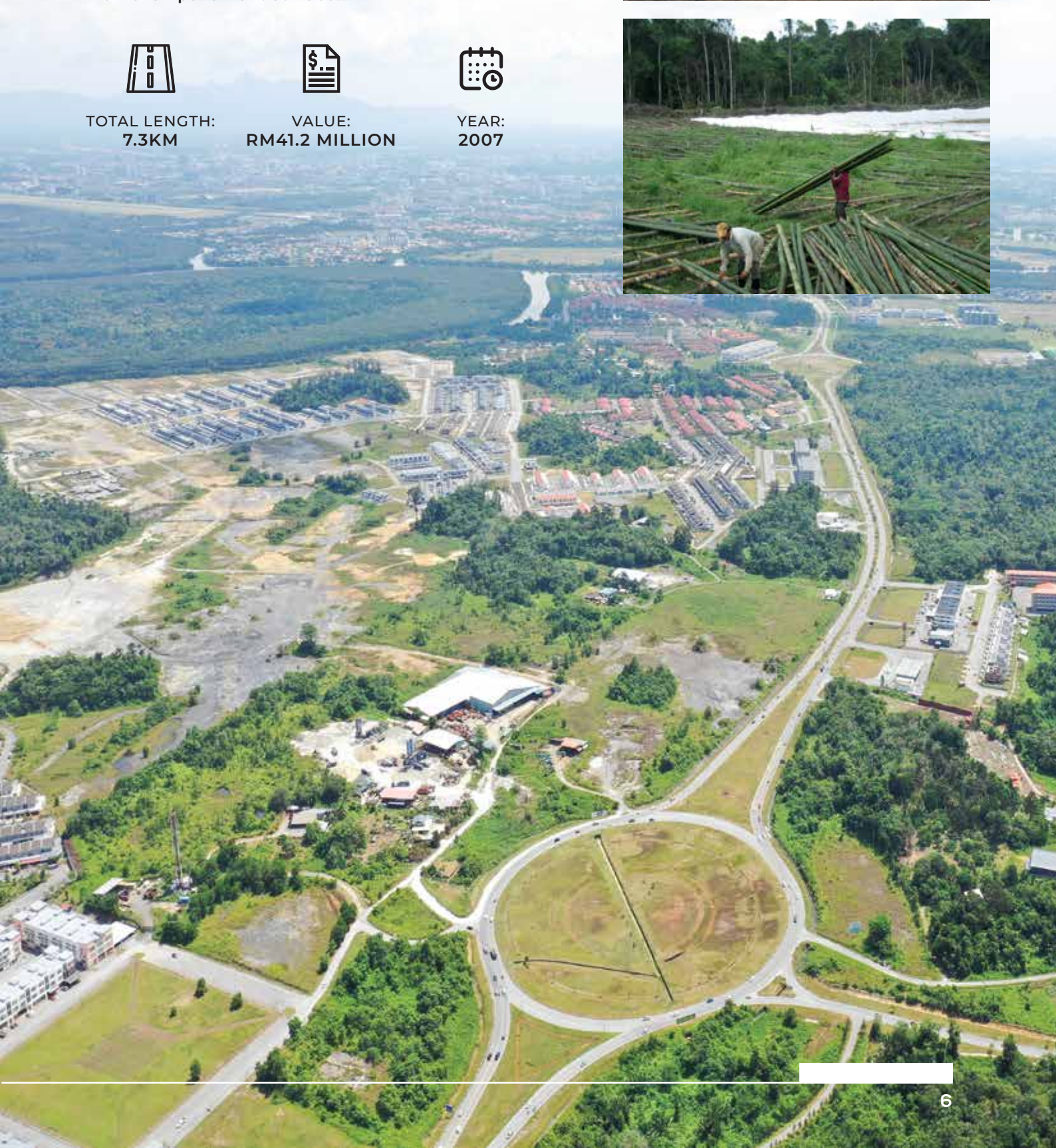
TOTAL LENGTH:  
7.3KM



VALUE:  
RM41.2 MILLION



YEAR:  
2007





## PAN BORNEO HIGHWAY SARAWAK

The Pan Borneo Highway was officially launched by the Prime Minister of Malaysia in Bintulu on 31 March 2015. Construction works along a 42 km stretch from the Nyabau to Bakun junctions began soon after. This marked the kick-off project for the Pan Borneo Highway.



### NYABAU JUNCTION (BINTULU) TO PUJUT LINK (MIRI) SECTION

Upgrading of Existing Jalan Bakun Junction to Pujut link Road from its current 'R3' Standard single carriageway to a new 'R5' standard dual carriageway; which includes the construction of thirteen (13) new dual carriageway bridges over rivers and streams and the construction of eight (8) new interchanges / flyovers.



TOTAL LENGTH:  
166KM



VALUE:  
RM3.5 BILLION



YEAR:  
2016

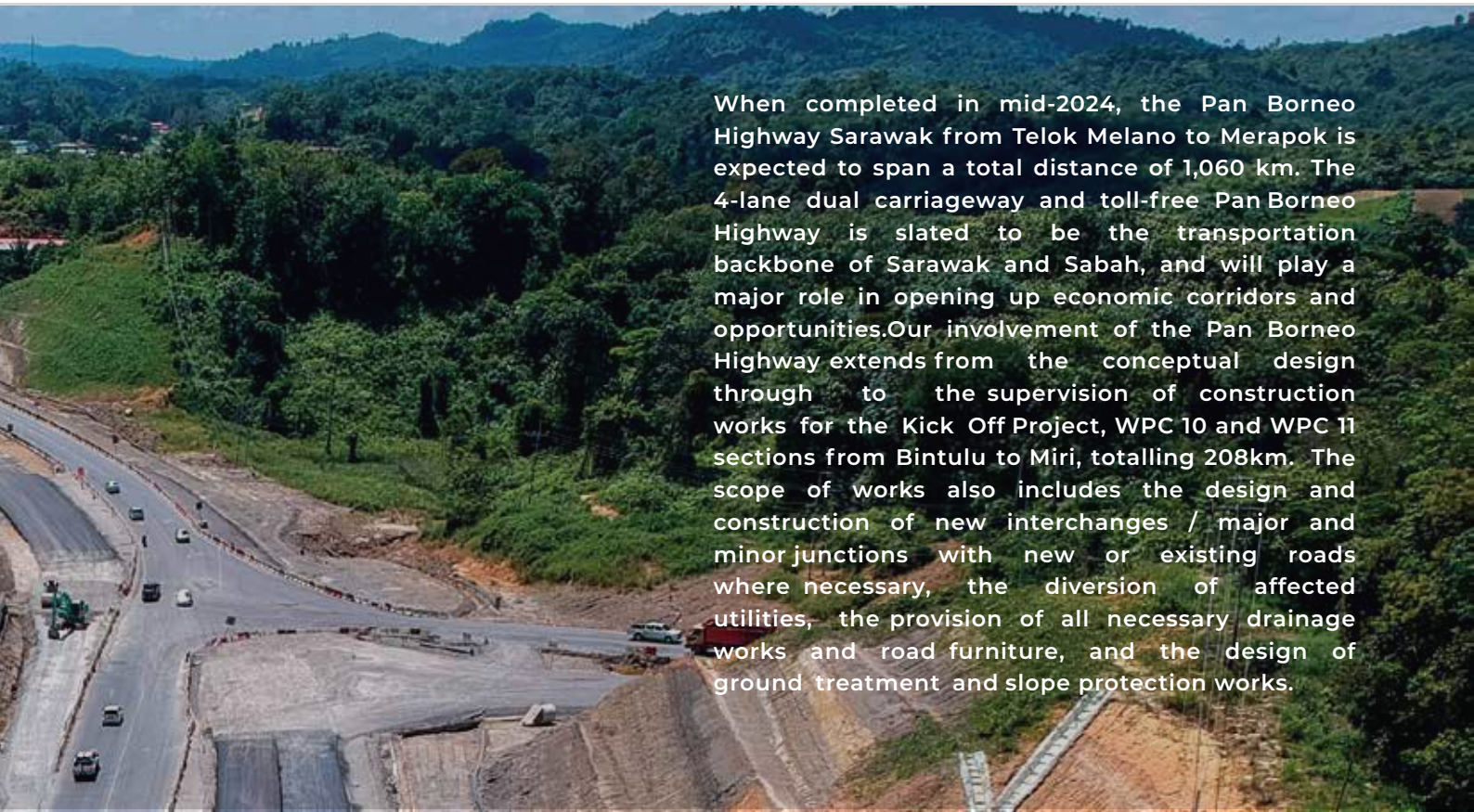


PUJUT LINK, SG MIRI



SUAI





When completed in mid-2024, the Pan Borneo Highway Sarawak from Telok Melano to Merapok is expected to span a total distance of 1,060 km. The 4-lane dual carriageway and toll-free Pan Borneo Highway is slated to be the transportation backbone of Sarawak and Sabah, and will play a major role in opening up economic corridors and opportunities. Our involvement of the Pan Borneo Highway extends from the conceptual design through to the supervision of construction works for the Kick Off Project, WPC 10 and WPC 11 sections from Bintulu to Miri, totalling 208km. The scope of works also includes the design and construction of new interchanges / major and minor junctions with new or existing roads where necessary, the diversion of affected utilities, the provision of all necessary drainage works and road furniture, and the design of ground treatment and slope protection works.

## JALAN NYABAU TO JALAN BAKUN JUNCTION (KICK – OFF SECTION)

Upgrading of existing Nyabau junction up to Bakun junction from its current 'R3' standard single carriageway to a new 'R5' standard dual carriageway and the construction of four (4) new dual carriageway bridges.



TOTAL LENGTH:  
42KM



VALUE:  
RM637.7 MILLION



YEAR:  
2015



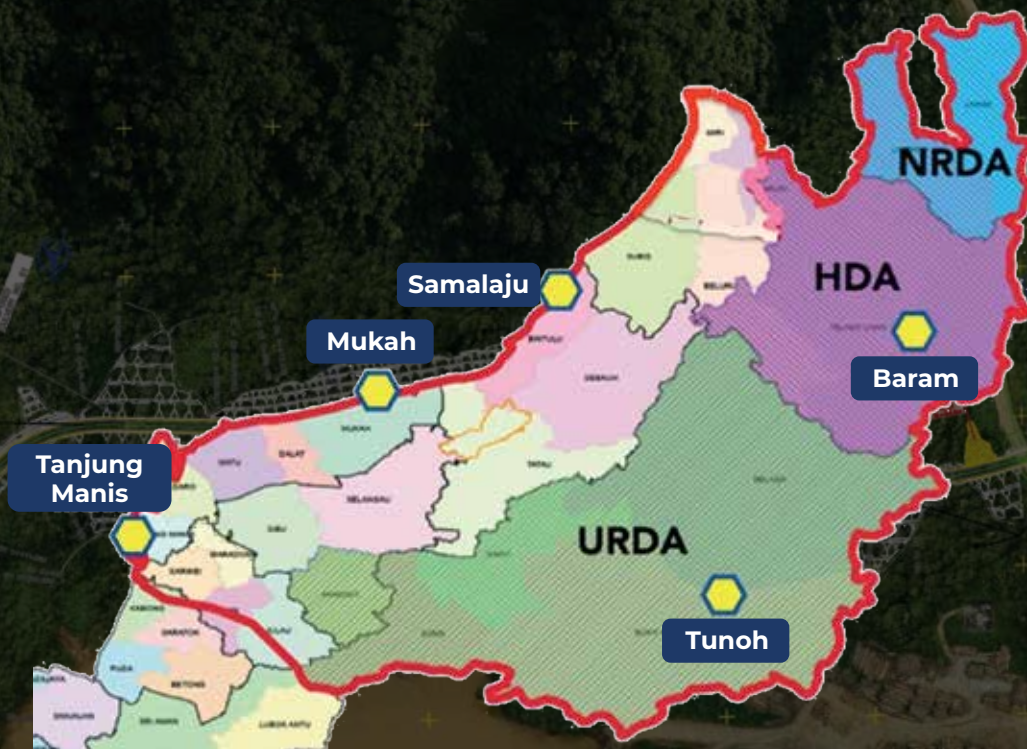
NYABAU



KOP



## REGIONAL CORRIDOR DEVELOPMENT AUTHORITY (RECODA)



In 2018, SCORE has expanded its boundary to cover new additional areas, which includes the northern area of Sarawak with a total area of approximately 100,000 km<sup>2</sup>.

In order to accelerate the development of the Hinterland and the Northern Region of Sarawak, the State Government established the Upper Rajang Development Agency (URDA), Highland Development Agency (HDA) and Northern Region Development Agency (NRDA), as development agencies under RECODA.

The Upper Rajang Development Agency (URDA) focuses on the infrastructure needs in the Upper Rajang area which covers Kapit, Belaga, Bukit Mabong, Kanowit and Song, while the Northern Region Development Agency (NRDA) focuses on the infrastructure needs in the Northern Region area which covers the whole Limbang and Lawas Divisions.



▲ NORTHERN REGION DEVELOPMENT AGENCY (NRDA)  
PACKAGE 1



▲ UPPER RAJANG DEVELOPMENT AGENCY (URDA)  
PACKAGE 2



## UPPER RAJANG DEVELOPMENT AGENCY (URDA)

### PACKAGE 2

- Proposed New Road for Rh. Undi/ Rh. Seli/ Rh. Mamut/ Rh. Ai, Antawau, Sg. Bena (RM 50mil)
- Proposed New Road from Antaruh Junction to Existing Logging Road (RM14mil)
- Proposed New Road from Baleh Bridge/ Rh. Belaja, Ng. Benin/ SK. Ng. Pelagus/ Pelagus Resort (RM 115mil)



VALUE:  
RM451.5 MILLION



YEAR:  
2019



TOTAL LENGTH:  
64.7KM

- Proposed Upgrading of Existing Ex-Logging Road to Skim Tunoh, Melinau Kapit (RM55 mil)
- Proposed New Access Road to Tunoh Scheme (RM17.5mil)
- Proposed New RC bridge across Batang Baleh at Nanga Gaat & New R1 Standard Road to Rumah Tungku (RM200mil)

## NORTHERN RAJANG DEVELOPMENT AGENCY (NRDA)

### PACKAGE 1

- Proposed Upgrading Of Existing And Construction Of New Road From Kampung Pendam To Kampung Ipai, Limbang District, Limbang Division (RM 47.5mil)
- Proposed Construction Of New Road From Rangau To Kuala Limbang, Limbang District, Limbang Division (In Progress)
- Proposed Construction Of New Trailer Parking Centre, Limbang District, Limbang Division (In Progress)



VALUE:  
RM245 MILLION



YEAR:  
2019



TOTAL LENGTH:  
35.8KM

- Proposed Construction Of New Road From Bukit Lubok To Kampung Seberang Kedai, Limbang District, Limbang Division (RM24.3 mil)
- Proposed Upgrading Of Existing Road From Nanga Medamit To Rumah Aling, Limbang District, Limbang Division (In Progress)
- Proposed Upgrading Of Existing Tedungan-Pandaruan Road, Limbang District, Limbang Division (RM19 mil)



## NORTHERN COASTAL HIGHWAY (NCH), LAWAS PACKAGE (SECTION 1), LIMBANG DIVISION

Construction of 22.5km of new dual carriageway road to R5 standard from Mengkalap CIQ to Lawas Town including interchanges, flyovers, two (2) bridges crossing Sungai Trusan & Sungai Siang and 6.3km access road to the new Lawas airport site.



VALUE:  
IN PROGRESS



YEAR:  
2020





### JALAN OYA – MUKAH – BALINGIAN AND NEW BALINGIAN BRIDGE, MUKAH DIVISION, SARAWAK

- a) Construction of 31 km long road through
  - 22km over deep marine clay
  - 9km over deep highly compressible peat soil
- b) Balingian R.C. Bridge



TOTAL LENGTH:  
31KM



VALUE:  
RM160 MILLION



YEAR:  
2007



### UPGRADING OF JALAN PUJUT 7 – TUDAN – KUALA BARAM, TO DUAL CARRIAGEWAY ROAD, MIRI DIVISION, SARAWAK

Upgrading of 15km of existing road linking Pujut, Tudan and Kuala Baram to dual carriageway which includes a new parallel R.C. Bridge over Sg. Miri along Jalan Pujut 7.



TOTAL LENGTH:  
15KM



VALUE:  
RM115 MILLION



YEAR:  
2013



**UPGRADING OF JALAN SIBU-BINTULU FROM PERINDUSTRIAN KEMENA TO NEW BINTULU AIRPORT & A NEW PARALLEL BRIDGE OVER BATANG KEMENA, BINTULU DIVISION, SARAWAK**

The construction of a new parallel two-lane bridge (Length: 465m), over Btg. Kemena, and the upgrading of 7km of existing R3 Road to dual-Carriageway R5 road standard.



TOTAL LENGTH:  
17.6KM



VALUE:  
RM150 MILLION



YEAR:  
2005



**NEW JALAN RAYA SIMPANG PULAI – LOGING – GUA MUSANG – KUALA BERANG (PAKEJ 4 – POS BLAU KE KG. KUALA BETIS), PAHANG**

Construction of a new 20km long road to R3 standard (7m wide carriageway and 2m wide paved shoulders) through very hilly terrain.



TOTAL LENGTH:  
20KM



VALUE:  
RM60 MILLION



YEAR:  
2005



**UPGRADING OF SARAWAK 1ST TRUNK ROAD – BETONG – KAYU MALAM (SG. MALUPA TO SIMPANG ROBAN), SRI AMAN DIVISION, SARAWAK**

The upgrading of approximately 24km of existing tar sealed road through rolling to hilly terrain to a two lane single carriageway road with a total width of 7.3m.



TOTAL LENGTH:  
24KM



VALUE:  
RM27.5 MILLION



YEAR:  
2003







## KUCHING URBAN TRANSPORTATION SYSTEM (KUTS) – SAMARAHAN BLUE LINE

The Sarawak Government through Sarawak Metro Sdn Bhd (SMSB) intends to design, build and commission the Kuching Urban Transportation System (KUTS), aiming to serve as the backbone of public transport system of Greater Kuching. KUTS will adopt hydrogen powered vehicles (H2V) and the use of hydrogen powered feeder buses in serving the alignment.

The Samarahan Blue Line - Rembus to Hikmah Exchange is approximately 27km in length, consisting of fourteen (14) stations with one (1) interchange station at Simpang Tiga, one (1) main station at Hikmah Exchange and one (1) Heavy Maintenance Depot at Rembus.

Minsar is a JV partner (KMKJV) delivering the Detailed Design Consultancy services for the Samarahan Blue Line.



## BRIDGE OVER SUNGAI SARAWAK AT SEJINGKAT, KUCHING-SAMARAHAN DIVISION

Bridge over Sungai Sarawak at Sejingkat comprises three (3) river spans of 200m-400m-200m cable stayed bridge and six (6) approach spans of 40m long prestressed concrete T-Girders at each end. It is a four-lane dual carriageway bridge over Sungai Sarawak. The approach roads, upgrading of major junctions and associated civil works are to JKR R5 (Arahan Teknik 8/86 Pindaan 2015) geometric standard.



TOTAL LENGTH:  
3.4KM



VALUE:  
IN PROGRESS



YEAR:  
2020





## BATANG RAMBUNGAN BRIDGE, KUCHING DIVISION

Batang Rambungan Bridge comprises three (3) river spans of 80m-160m-80m cable-stayed bridge along with two (2) and four (4) approach spans of 40m long prestressed concrete T-Girders at Kuching and Lundu end respectively. It is a two-lane single carriageway bridge with approach roads and associated civil works to JKR R5 (Arahan Teknik 8/86 Pindaan 2015) geometric standard.



TOTAL LENGTH:  
1.4KM



VALUE:  
RM99 MILLION



YEAR:  
2017



## BRIDGE OVER SG. MIRI, MIRI DIVISION

Upgrading of existing Pujut – Tudan – Kuala Baram Road to a R5 dual carriageway road to Kuala Baram. This project includes 5-spans of 30m long prestressed concrete I-Girders bridge over Sungai Miri along Pujut Road.



TOTAL LENGTH:  
15KM



VALUE:  
RM115 MILLION



YEAR:  
2011





## PAN BORNEO HIGHWAY (WPC10 & WPC11) NYABAU JUNCTION (BINTULU) TO PUJUT LINK (MIRI) SECTION

### MIRI AIRPORT FLYOVER, MIRI DIVISION

Miri Airport Flyover is a project under Pan Borneo Highway. It comprises six (6) spans of 30m, eight (8) spans of 31m and three (3) spans of 40m prestressed concrete I-Girder bridges. It is a four-lane dual carriageway interchange. The approach roads and associated civil works are to JKR R5 (Arahan Teknik 8/86 Pindaan 2015) geometric standard.



TOTAL LENGTH:  
1.56KM



VALUE:  
REFER PAN BORNEO  
HIGHWAY



YEAR:  
2015



### MILE 5 – NYABAU INTERCHANGE, BINTULU DIVISION

Mile 5 – Nyabau Interchange is the longest interchange under the Pan Borneo Highway Project. It comprises ten (10) spans of 30m, twenty-six (26) spans of 31m, and three (3) spans of 40m prestressed concrete I-Girders. It is a four-lane dual carriageway interchange. The approach roads and associated civil works are to JKR R5 (Arahan Teknik 8/86 Pindaan 2015) geometric standard.



TOTAL LENGTH:  
3.1KM



VALUE:  
REFER PAN BORNEO  
HIGHWAY



YEAR:  
2015





## BATANG SARIBAS BRIDGE, BETONG DIVISION

Batang Saribas Bridge comprises eight (8) river spans of prestressed concrete box girder (balanced cantilever construction) with two nos. 200m for the main spans, and four (4) approach spans of 40m long prestressed concrete T-Girders at each end. It is a two-lane single carriageway bridge over Batang Saribas, which is currently served by ferry service that operates within certain hours. The approach roads and associated civil works are to JKR R5 (Arahan Teknik 8/86 Pindaan 2015) geometric standard.



TOTAL LENGTH:  
4.8KM



VALUE:  
RM375.5 MILLION



YEAR:  
2019



## MARUDI BRIDGE OVER BATANG BARAM, MIRI DIVISION

Marudi Bridge over Batang Baram comprises three (3) river spans of prestressed concrete box girder (balanced cantilever construction) of 150m for the main span, and four (4) approach spans of 40m long prestressed concrete T-Girders at each end. It is a two-lane single carriageway bridge with approach roads and associated civil works to JKR R5 (Arahan Teknik 8/86 Pindaan 2015) geometric standard.



TOTAL LENGTH:  
1.5KM



VALUE:  
RM116.5 MILLION



YEAR:  
2018



## SATOK FLYOVER, KUCHING DIVISION

Works comprises construction of two (2) numbers of two-lane flyovers along Jalan Satok, improvement of Jalan Palm including road widening to dual carriageway, widening of drains, utilities diversions and traffic management plans.



TOTAL LENGTH:  
1.1KM



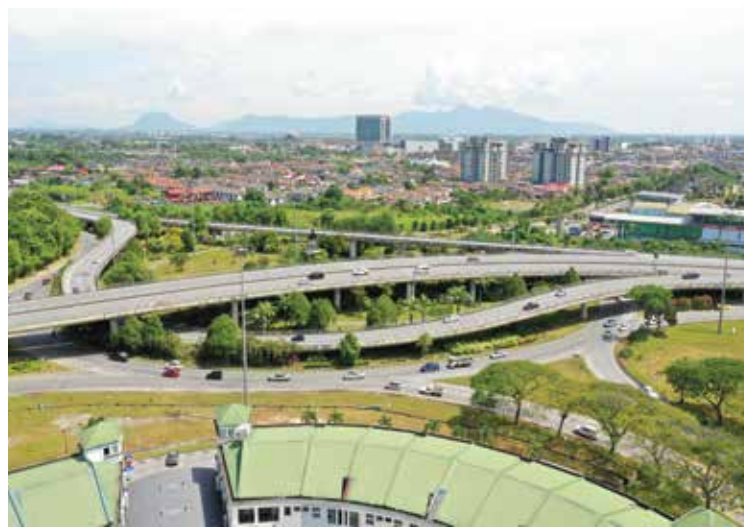
VALUE:  
RM45 MILLION



YEAR:  
1996







## KENYALANG FLYOVER, KUCHING DIVISION

Kenyalang Flyover comprises four reinforced concrete voided deck flyovers over the existing Kenyalang Roundabout in the following directions:

- i) Kuching Town to Kuching International Airport = 420m
- ii) Kuching International to Kuching Town = 427m
- iii) Kuching Town to Serian = 306m
- iv) Serian to Kuching Town = 349m

Each flyover is a two-lane single carriageway bridge. This project was inclusive of extensive traffic management plans, upgrading of the existing road to Kuching International Airport, at grade roundabout, spur roads, drainage, utilities diversions and other associated works.



TOTAL LENGTH:  
1.5KM



VALUE:  
RM98 MILLION



YEAR:  
2006



## JALAN SONG FLYOVER, KUCHING DIVISION

Scheme and detailed design through to the construction supervision of a 4-lane dual carriage-way (2 lanes in each direction) voided deck slab flyover at Jalan Song Junction and along Jalan Tun Jugah. The construction was inclusive of utilities diversions, drainage upgrades and traffic management plans.



TOTAL LENGTH:  
2.9KM



VALUE:  
RM50 MILLION



YEAR:  
2010





## PUCHONG FLYOVER, MIRI DIVISION

Works involved are the construction of two-lane single carriageway reinforced concrete voided deck slab flyovers of 300m at the existing Puchong Roundabout, upgrading of approach roads, drainage, utilities diversions and traffic management plans. Puchong Flyover was built along Jalan Miri Bintulu to Jalan Miri Pujut and the opposite direction as well. Our team was engaged as the lead C&S consultant under the Turnkey Contractor.



TOTAL LENGTH:  
1.2KM



VALUE:  
RM42 MILLION



YEAR:  
2006

## BATANG KEMENA BRIDGE, BINTULU DIVISION

Works involved are the construction of a 456m long prestressed concrete box girder bridge, upgrading of approach roads, drainage, utilities diversions and traffic management plan. Batang Kemena Bridge was the second bridge in Malaysia to be built using the Incremental Launching Method (ILM). This project comprises two (2) spans of 32m, two (2) spans of 40.5m, six (6) spans of 43m and one (1) span of 53m prestressed box-girder that was incrementally launched. It is a four-lane dual carriage-way bridge (2 lanes in each direction), with approach roads to JKR R5 (Arahan Teknik 8/86) geometric standard. Our team was engaged as the lead C&S consultant under the Turnkey Contractor.



TOTAL LENGTH:  
17.6KM



VALUE:  
RM150 MILLION



YEAR:  
2003





## PUJUT FLYOVER, MIRI DIVISION

Works involved are the construction of two-lane dual carriageway voided deck reinforced concrete flyovers of 1km at the existing Pujut Roundabout, upgrading of approach roads, drainage, utilities diversions and traffic management plans. Pujut Flyover was built along Jalan Miri Pujut to Jalan Miri Lutong and the opposite direction as well. Our team was engaged as the lead C&S consultant under the Turnkey Contractor.



TOTAL LENGTH:  
1.5KM



VALUE:  
RM65 MILLION



YEAR:  
2006



## BALINGIAN BRIDGE, MUKAH DIVISION

Construction of a 31km long road, which is divided into 22km of road over marine clay and 9km of road over highly compressible peat soil. This project comprises two (2) spans of 30m prestressed concrete T-Girders and three (3) spans of 48m-60m-48m RC cantilever voided deck slab bridges. Our team was engaged as the lead C&S consultant under the Turnkey Contractor.



TOTAL LENGTH:  
31KM



VALUE:  
RM160 MILLION



YEAR:  
2003



## OTHER NOTABLE ROAD & BRIDGE PROJECTS



TOTAL  
LENGTH



VALUE

PROPOSED ROAD LINKING BATU KAWA  
TO STEPHEN YONG, KUCHING DIVISION

8.4KM

TBA

PROJEK MENAIKTARAF JALAN BALAK KE  
PENEMPATAN SEMULA METALUN (FASA 6)  
DI KAPIT, SARAWAK

11.3KM

RM85.8 MILLION

PROPOSED UPGRADING OF JALAN BATANG  
STRAP, SAPAK, ISU KE SIMPANG UBAH,  
SRI AMAN DIVISION

6.7KM

RM35.8 MILLION

SABAH SARAWAK LINK ROAD  
PHASE 2 (SSR2) - PACKAGE 4

100KM

RM1.8 BILLION

JALAN HAB HALAL TANJUNG MANIS,  
MUKAH DIVISION

17.8KM

RM77.5 MILLION

JALAN SG. BIDUT - KPG SEBEDIL -  
KPG. BUNGAN KECIL, SIBU DIVISION

16KM

RM126 MILLION

JALAN SIBU/ BAWANG ASSAN /  
SERENDANG, SIBU DIVISION

11.34KM

RM222 MILLION

UPGRADING OF TG. BATU ROAD AND A  
NEW SPUR ROAD FROM COAST TO BDA  
HEADQUARTERS, BINTULU DIVISION

5KM

RM18 MILLION

SEMARIANG RIVERINE LOOP ROAD,  
KUCHING DIVISION

10.2KM

RM84 MILLION

TRANS-ASEAN DUAL CARRIAGEWAY  
ROAD, INCLUDING PARALLEL BRIDGE  
AT PUJUT 7, MIRI DIVISION

15KM

RM115 MILLION

ROAD LINKING MILE 32 AND COASTAL  
ROAD (PACKAGE B), MIRI DIVISION

10KM

RM65 MILLION

LONG LAMA BRIDGE OVER  
BATANG BARAM, MIRI DIVISION

2.1KM

RM69 MILLION

BARAM DAM ACCESS ROAD (PACKAGE B),  
MIRI DIVISION (DESIGN ONLY)

64KM

IMPROVEMENT OF JALAN PALM /  
ONG KEE HUI, KUCHING DIVISION

PETRA JAYA BOULEVARD, KUCHING  
DIVISION

PROPOSED MATU / IGAN COASTAL ROAD,  
SARIKEI DIVISION



# MASTER PLAN & FEASIBILITY STUDIES



YEAR

## SIBU TRAFFIC STUDY

Traffic Master Plan Study for Sibu Town was carried out back in 1993 in association with Minconsult Sdn. Bhd.

1993

## SARAWAK COASTAL FEASIBILITY STUDY AND DESIGN (MUKAH DIVISION)

Works include feasibility study and design of 180km length of roads through deep marine clays and deep highly compressible peat soil. Additional roles include contract administration and construction supervision.

2007

## MASTERPLAN AND INFRASTRUCTURE STUDY FOR ISTHMUS DEVELOPMENT - KUCHING

2007

## GREATER KUCHING DEVELOPMENT PLAN STUDY

Development of overall conceptual integrated public transportation network, Transit-Oriented Developments, and Road Network Plans towards 2050.

2018

## KUCHING CITY COMPETITIVENESS MASTER PLAN STUDY

Analysis and development of masterplan for public transportation systems and road networks in relation to the Kuching City 2030 Vision.

2018

## MASTERPLAN OF DEEP SEA PORT AT TANJUNG PO, KUCHING, SARAWAK

Masterplanning of road and rail connectivity to proposed Deep Sea Port, Study of hinterland connectivity.

2021

## KAJIAN KEMUNGKINAN UNTUK CADANGAN KAWASAN INDUSTRI PERKAPALAN DI PALOH

2021

## DEVELOPMENT UNDER UPPER RAJANG DEVELOPMENT AGENCY - PROPOSED DETAILED MASTER PLAN FOR KAPIT

2022

## MASTER PLAN STUDY FOR THE PROPOSED BINTULU URBAN REDEVELOPMENT AREA

2022

## HIGHWAY NETWORK DEVELOPMENT PLAN 2040 FOR SARAWAK

2024





minsar

**JURUTERA MINSAR CONSULT SDN BHD**

Co. No. 198501013529 (145985-V)

**Lot 6 & 7, Level 2 & 3, Westmoore House,  
Twin Tower Centre, Rock Road,  
93200 Kuching, Sarawak.**

☎ **+6082-421061**

📠 **+6082-415040**

✉ **minsar@minsar.com.my**

🌐 **www.minsar.com.my**

📌 **Jurutera Minsar Consult Sdn Bhd**